



ENGLISH



INFLATABLE TENTS

VERSATILE. PREMIUM QUALITY. EASY TO USE.



SERIES	4-7
ELEMENTS	8-11
BRANDING	12-15
FEATURES	16-19
ACCESSOIRES	20-21
STYLISH ADDITIONS	22-23



THE INFLATABLE X GLOO TENT



VERSATILE



PREMIUM
QUALITY



EASY TO USE

Incomparably innovative and versatile as:

- a pavilion for the impressive presentation of your products at trade fairs, events and roadshows
- an outdoor event tent on asphalt, the beach, the mountains and the most rugged terrain
- a rescue tent for the effective protection of people and equipment
- a mobile office and shelter at temporary job sites and mobile construction sites
- a solution for temporary space for YOUR occasion

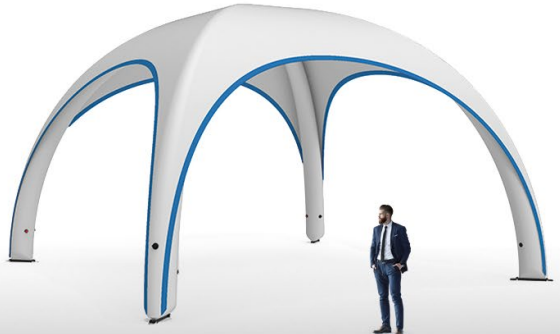
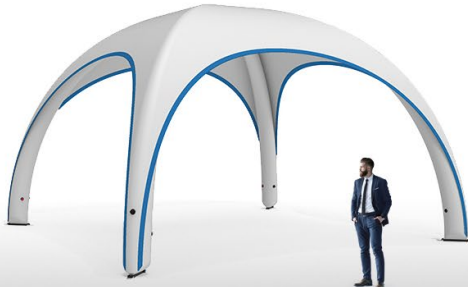
...and always featuring:

- ample advertising space
- an attractive design
- lightweight construction and easy handling
- quick setup times
- visibly high-quality workmanship



THE XD TENT SERIES

Tents from 3x3 m up to massive tent combinations.



XD 3 TENT

Specifications of the new XD 3 tent can be found on pages 6 and 7.

XD 4 TENT

Ideal for smaller construction areas and exhibition stands starting at 4x4m. The dome-shaped roof offers a perfect display for your products. Thanks to the optional components available, this space can be individually designed, and/or expanded as needed by combining several tents. Another advantage: Lightweight and compact, the XD 4 tent can be transported by just one person and set up very easily.

SPECIFICATIONS

Side length:	13.1 ft	4 m
Entrance height:	6.9 ft	2,1 m
Total height:	9.1 ft	2,8 m
Tube diameter:	10 in	0,25 m
Covered area:	102.3 ft2	9,5 m²
Weight:	293 lb	15 kg
Air pressure:	0,35 bar	5 psi
Setup time with electric pump:	8-10 min	

ELEMENTS

Standard Wall	Canopy / Banner
Entrance Wall	Tunnel Parts
Window Wall	Tent Junction
Dividing Walls	Vehicle Sleeve

XD 5 TENT

Our most popular model. Thanks to additional components such as roof and canopy banners, it can be perfectly adapted to suit a variety of requirements. Its size also offers enough space to accommodate both larger groups of visitors or products such as jet skis or compact cars. Despite the space it offers, the weight of the XD 5 - less than 20 kg- makes it light and compact. It can be carried by one person and set up easily.

SPECIFICATIONS

Side length:	16.4 ft	5 m
Entrance height:	7.9 ft	2,4 m
Total height:	10.8 ft	3,3 m
Tube diameter:	12 in	0,31 m
Covered area:	161 ft2	15 m²
Weight:	41.4 lb	18,8 kg
Air pressure:	0,26 bar	4 psi
Setup time with electric pump:	10-13 min	

ELEMENTS

Standard Wall	Canopy / Banner
Entrance Wall	Tunnel Parts
Window Wall	Tent Junction
Dividing Walls	Vehicle Sleeve

XD 6 TENT

Thanks to the enormous amount of space and optional additional components, such as roof and canopy banners, the XD 6 model offers a very customer-oriented tent solution. This versatile tent provides the right presentation environment for your brand and larger products, while keeping your displays, seating and guests out of the rain and elements. With an individual, custom-made, high-quality print, it is guaranteed to be an eyecatcher.

SPECIFICATIONS

Side length:	19.7 ft	6 m
Entrance height:	9.8 ft	3 m
Total height:	13.1 ft	4 m
Tube diameter:	15 in	0,37 m
Covered area:	226 ft2	21 m²
Weight:	49.6 lb	22,5 kg
Air pressure:	0,26 bar	4 psi
Setup time with electric pump:	10-15 min	

ELEMENTS

Standard Wall	Canopy / Banner
Entrance Wall	Tunnel Parts
Window Wall	Tent Junction
	Vehicle Sleeve

XD 7 TENT

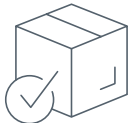
The XD 7 tent provides a huge covered area for your big event and offers ample space for effective advertising through high-quality printing. Despite its impressive size, the XD 7 weighs only 34 kg. With the help of an electric pump, it can be set up by two people in about 20 minutes.

SPECIFICATIONS

Side length:	23 ft	7 m
Entrance height:	11.4 ft	3,5 m
Total height:	15.1 ft	4,6 m
Tube diameter:	16 in	0,42 m
Covered area:	312.2 ft²	29 m²
Weight:	74.7 lb	33,9 kg
Air pressure:	0,26 bar	4 psi
Setup time with electric pump:	20 min	

ELEMENTS

Standard Wall	Canopy / Banner
Entrance Wall	Tunnel Parts
Window Wall	



INCLUDED IN PACKAGE

Tent, Hand Pump, Anchoring Line Set, Closing Rod (XD5-7), User Manual and Repair Kit.

THE NEW XD 3 TENT

A compact tent for 3x3 m exhibition areas.



XD 3 TENT

The XD 3 tent gives ordinary 3x3 m exhibition booths an extraordinary look. The high, dome-shaped roof provides a vaulted space in which visitors and users feel much more comfortable than in conventional pavilions and pole tents.

Thanks to its minimal weight (just over 9 kg), the convenient transport using the included backpack and the easy setup, one person can build the tent standing in just five minutes. The materials and processing methods used in the XD 3 guarantee a long product life.

SPECIFICATIONS

Side length:	9.8 ft	3 m
Entrance height:	6.6 ft	2 m
Total height:	8.9 ft	2,7 m
Tube diameter:	10 in	0,25 m
Covered Area:	60.3 ft2	5,6 m ²
Weight:	19.8 lb	9 kg
Air pressure:	0,35 bar	5 psi
Setup time with electric pump:	6-9 min	

ELEMENTS

- Entrance Wall
- Window Wall
- Standard Wall
- Tunnel Parts

„These tents look awesome! I am excited to do more projects together with X GLOO.“

Dan Paulsrud, GMR Marketing



ELEMENTS

Available wall and tunnel components provide a larger surface for branding, optionally divide the space in the tent and offer extra shade and protection from wind and weather.



STANDARD WALL XD 3-7

The standard wall provides complete privacy as well as generous advertising space. The convenient zipper system allows you to display your graphics inside or outside. **2-sided printing also available.**



STANDARD WALL FROM MESH XD 3-7

The standard wall made of textile MESH (mesh fabric) allows the air to circulate inside the tent and still offers a generous, brilliant advertising space.



TUNNEL PARTS XD 3-7

The connecting tunnel creates a visually seamless and weatherproof roof transition from one tent to the other.



ENTRANCE WALL XD 3-7

The entrance wall opens and closes the event tent, making it a walk-in space. The sides can be divided via the center zipper and tied to the left and right tied to the left and right columns by means of a toggle fastener. **Alternatively, the additional door (XD 4-7) can be rolled up and fixed by Velcro.**



CANOPY XD 4-7

The arc of the canopy is created by means of its own inflatable tube at the front, which is inflated after zipping it onto the tent. The canopy effectively increases the covered area of the tent.



DIVIDING WALLS XD 5

The dividing wall divides the interior into several rooms. Depending on the application, it is available with a door or with a door and a small window, which can also be used as a pass-through.



WINDOW WALL XD 3-7

The transparent PVC window in the window wall reliably protects against wind and weather, and lets natural light in. The wide area below the window offers a convenient advertising space.



CANOPY BANNER XD 4-7

The optional, exchangeable canopy banner zips in at the front of the canopy to present your graphics prominently at the front of your booth.

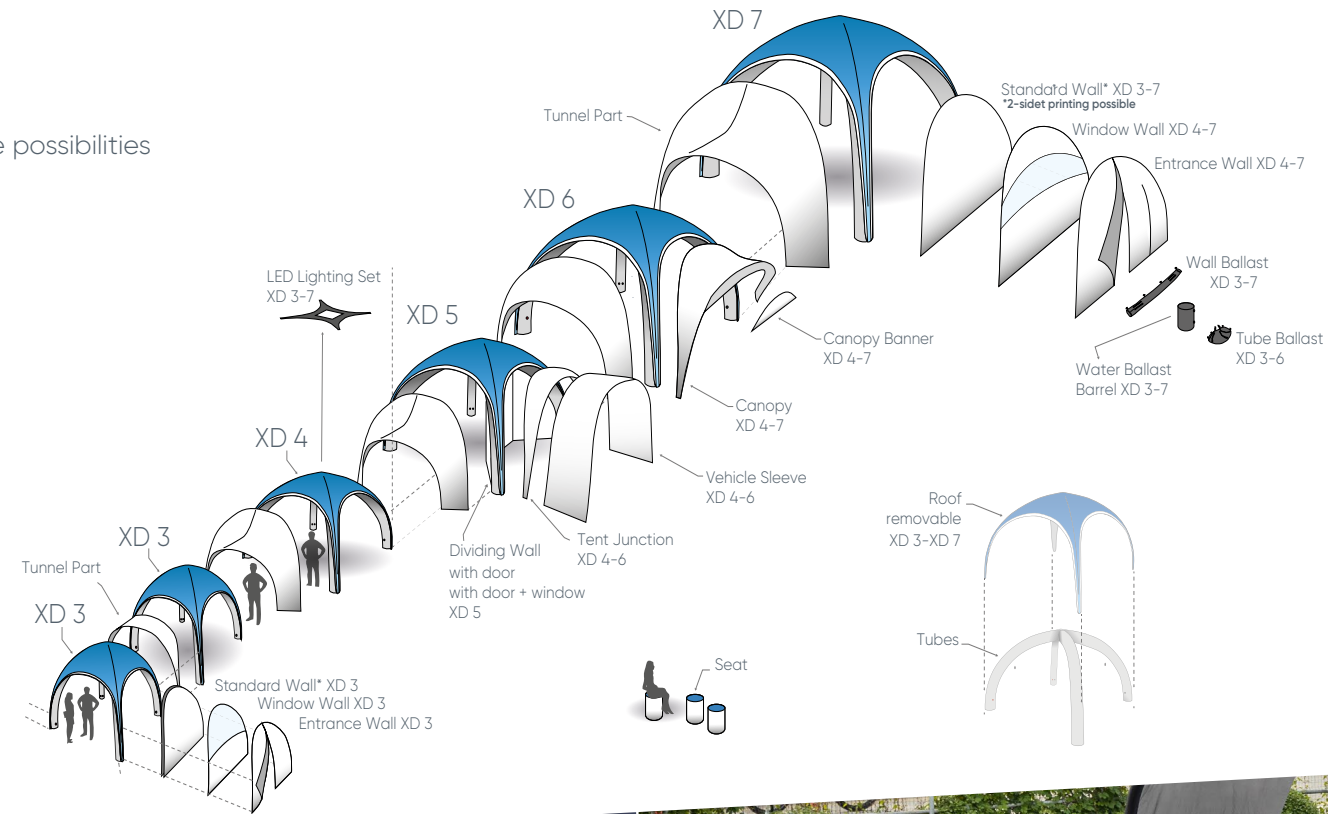


TENT JUNCTION / VEHICLE SLEEVE XD 4-6

They create open connections to house walls, vehicles or anything else.

DIVERSITY

The combinations are diverse, create multiple possibilities and design options.



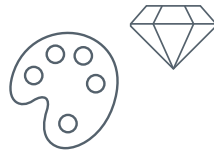
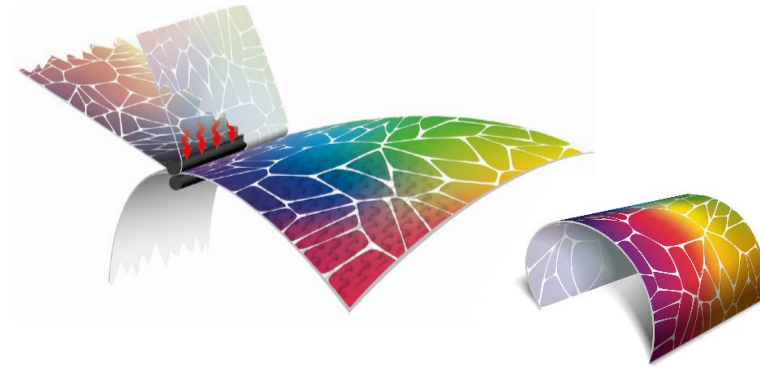
„I was impressed with the quality of the product. As a product designer I know the value of work that went into it: every aspect of the tent is very well thought through.“

Alexis Angelides, Carvingmagazine



DIGITAL PRINTING

is suitable for individual color design and personalization of the tents.



BRANDING ON WHITE FABRIC

The brilliant colors achieved through dye-sublimation printing guarantees you the perfect appearance.

With this design variant we refine the roof and the and elements of the tent over the entire surface. Simply provide us with your desired colors, logos, graphics and images. We then transfer your individual design via dye-sublimation printing onto our high-quality tent fabric, turning your event tent into a perfectly-branded eyecatcher.

ON REQUEST we will be happy to visualize your X GLOO tent for your specific application in 3D or you can get creative yourself with the [X GLOO design configurator](#), which is unique in the tent industry.

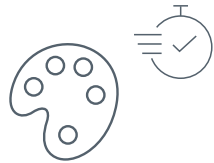
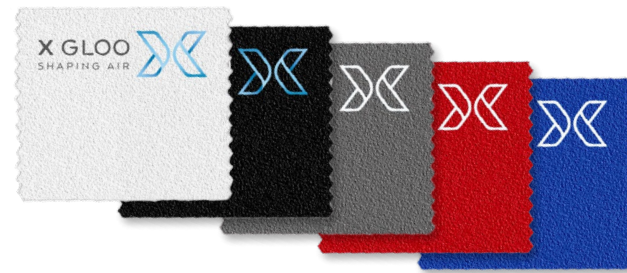
„You guys have done an amazing job with this, from the quality of material and design to the reproduction of our artwork. The X GLOO Tent is stunning! “

David Wilson, Director, Mauds Ice Creams



FOIL PRINTING

For the quick design and personalization of our in-stock tents.



BRANDING ON DYED FABRICS

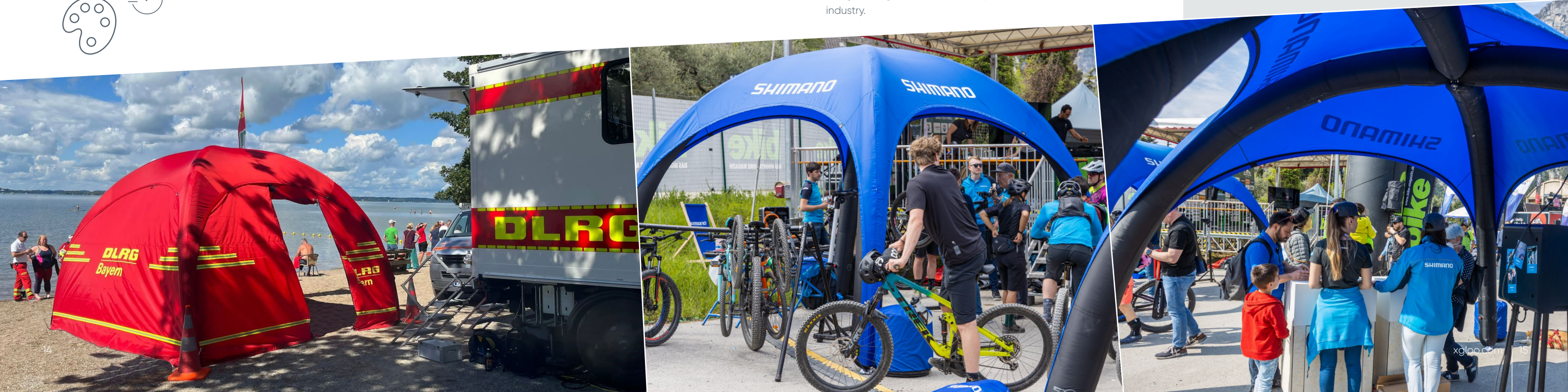
The date of your event is approaching but you still don't have a tent? For these occasions we keep a wide range of customizable products in stock. This means you can quickly get a unique, premium-quality tent as an eyecatcher for your event.

Using thermal-transfer foil printing, we apply your logos, graphics and images to partial areas of the tent in the in-stock color of your choice.

ON REQUEST, we will be happy to visualize your X GLOO tent for your specific application in 3D or you can get creative yourself with the [X GLOO design configurator](#), which is unique in the tent industry.

„The tents are proving to be a hit! We are getting great feedback for them and the visitors are really liking it. Thanks!“

Mike Sparks; Marketing Werks



FEATURES

The X GLOO tent combines a sophisticated design with the best possible incorporation of premium-quality materials

...down to the smallest detail.



VERSATILE



PREMIUM QUALITY



EASY TO USE



ONE-PUMP SYSTEM

for a quick and effective Setup.



„MADE IN EUROPE“ QUALITY

Our tents are engineered and designed in Chiemgau, Germany and Manufacturing takes place in our own production facility in Latvia.

We also focus on using materials which are primarily produced in Europe.



FORM STABILITY AND AESTHETICS

The tent combines aerodynamic design with the best possible incorporation of high-quality materials.

This unique combination makes the tent sturdy and the lightweight, open form creates a very individual atmosphere.



SPECIALLY-SELECTED MATERIALS

The tent protects against sun, rain and wind and is suitable for both indoor and outdoor use.

The specialized materials used are classified as “flame retardant” by the German standard DIN 4102-1 as well as the US standard CPAI 84 component.



FUNCTIONAL PRODUCT DESIGN

Zipper covers, sealed seams and a robust PU fabric coating are just a few of the signs that our high quality standards go down to the last detail, while also ensuring that the tent can perform in all weather conditions.





UV RESISTANT



FLAME RETARDANT



WATERPROOF



WIND RESISTANT



PRINTABLE



QUICK SETUP



MODULAR



ALL TERRAIN

We put great importance on taking a thorough approach to the development of our tents, to provide you with a high-quality product that offers the best value for money.

That's why we have tested our X GLOO tents in a professional wind tunnel. The results and findings helped guide us while shaping and processing, and when choosing sizes and materials.

The tests in the wind tunnel showed us where and how the statics and strength of the support structure (inflatable tubes) could be significantly improved and how an optimized relationship between column diameter and air pressure could be created.

The results are in these clear advantages:

The tubes lead steeply upwards, creating not only a more generous space, but also a larger roof area, which increases the available branding space.

At the same time, wind and weather resistance can be ensured by reinforcing the fabric in sensitive areas: X GLOO tents withstand winds of up to 60 km/h and offer a considerable advantage over folding tents and pole tents.

The implementation of our requirements and quality standards is ensured by our Latvian subsidiary MATOTEX. Together, we develop and produce hand in hand for the satisfaction of our customers.



A UNIFIED CONNECTION SYSTEM

Optional components, including walls, canopies and tunnel parts, are attached to the tent by means of highly-stable spiral zippers.

The unique roof-tube connection system allows for the roof to be easily exchanged – perfect if a tent with multiple design options is needed.



PREMIUM-HIGH QUALITY VALVES

The valves connect securely to the pump, so that no air is lost during inflation or when the pump is disconnected.

All valves used on the XD series of tents are flush-mounted on the tubes. If the air pressure inside the tubes is ever exceeded – when inflating or through exposure to direct sunlight for example – the built-in overpressure valves will automatically release excess air.



ONE-PUMP SYSTEM

The one-pump system is available as an optional upgrade for tents XD 4-7.

It allows an even faster setup and ensures uniform air distribution in all four tubes.



PURPOSEFUL REINFORCEMENTS

After careful evaluation of the XD tents in numerous wind tunnel tests, we engineered and added targeted reinforcements to points which were exposed or which came under stress: for example, a metal tube end for tents XD 4-7.

Thanks to a wide range of special anchoring options, the tents can withstand wind speeds of up to 60 km/h and can be set up on any surface and in any environment.



ACCESSOIRES

offers numerous options for securing your tent in strong winds, optimizing its appearance and simplifying transport and installation.

PUMP



Hand Pump - for all tent sizes



Electric Pump BRAVO 230/2000 - for all tent sizes



Grass Anchor Sets - for all tent sizes



Wall Ballasts - for all tent sizes

STABILITY

TRANSPORT



Back Pack - for all tent sizes
Transport Bag L - for XD 3-4 / XL - for XD 5-6



Transport Handtruck and Easy Bag - for all tent sizes



Water Ballast Barrels - for all tent sizes
Digitally-Printed Covers - a great seating option



Tube Ballasts - for XD 3-6

LIGHT & PROTECTION



Bag L - for XD 3-4 / XL - for XD 5-6



Convertible Hard Case/Counter - for XD 3-4



LED Lighting Kit - for all tent sizes



Protection Foil - for all tent sizes

STYLISH ADDITIONAL

Convertible Hard Case/Counter
with branded wrapping,
shelves and countertop.



Inflatable Couch



Inflatable Chair



Inflatable Cushion



Inflatable Seat

WE ARE X GLOO » WE SHAPE AIR

AIR IS OUR ELEMENT.
OUR CHALLENGE IS TO MAKE THE INTANGIBLE TANGIBLE!
WITH PASSION. FOR PEOPLE.



WE ARE X GLOO » OUR TEAM

We are excited about our products.
They are the result of our successful interplay of creative ideas, the development of
new technical textiles and innovative processing methods, our own European
production and service-oriented sales logistics.

Our highly motivated and competent team offers top class service for you to be a
satisfied X GLOO customer! We ensure to meet deadlines so that your individually
designed X GLOO tent can be used worldwide at the desired time.

[xglootents](#) 

[xglootents](#) 

[x-gloo](#) 

[xgloo](#) 

[tent.xgloo.com](#) 

[info@xgloo.com](#) 

+49 86 41-69 48-60 



Advice +49 (0) 8641 6948 60 / [info@xgloo.com](#)

Purchase [Find the dealer near you](#)

X GLOO GMBH & CO. KG • WINDECKSTR. 4 • 83250 MARQUARTSTEIN • GERMANY

XX0073 English

